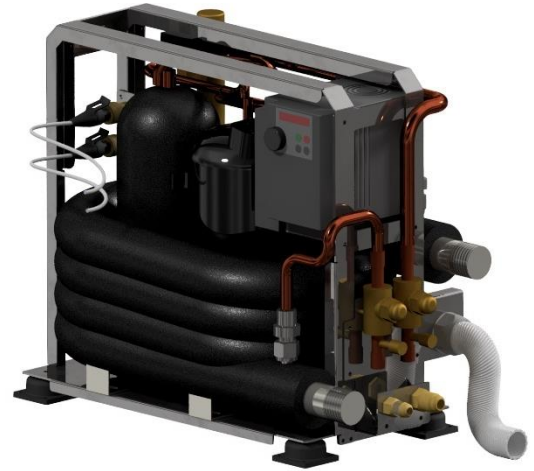


VRV8E1

DATASHEET



Cooling capacity KW	min 1,4	std 3	max 8
Cooling power source KW	min 0,2	std 0,5	max 1,5
Heating capacity KW	min 1,4	std 3	max 9
Heating power source KW	min 0,2	std 0,5	max 1,5

Power supply:	180 - 250 V 1Phase / 50-60Hz		
Sea water pump:	Magnetic type 80 watt included in unit power consumption. 80 lt/min		
Size W x D x H:	459 x 229 x 363 mm		
Weight:	22 Kg		
Sea water working range:	+3°C to +40°C	Option polar water: -5°C	
Air working range:	-20°C to +50°C		
Noise:	Compressor @ 140 hz – 73db @ 1 meter from box		
Vibration:	No significant vibration transmitted to the feet		
Sea water pipes connection:	1" BSP		
Refrigerant pipe:	1/2" Gas	3/8" Liquid	

Compressor box use VRV inverter architecture with refrigerant circulation inside air handler
Databus rs485 modbus on board

24Volt @ 100watt power supply 24VDC integrated in compressor unit for 1 air handler management

System based on Toshiba VFD and twin rotary compressor



CONDENSER:

Titanium Grade 2. No fouling, no corrosion. 3 times lighter than copper nickel
Titanium is an everlasting material that assure to your system long reliability



COMPRESSOR:

Toshiba inverter twin rotary. COP > 4



FRAME:

Stainless Steel 316



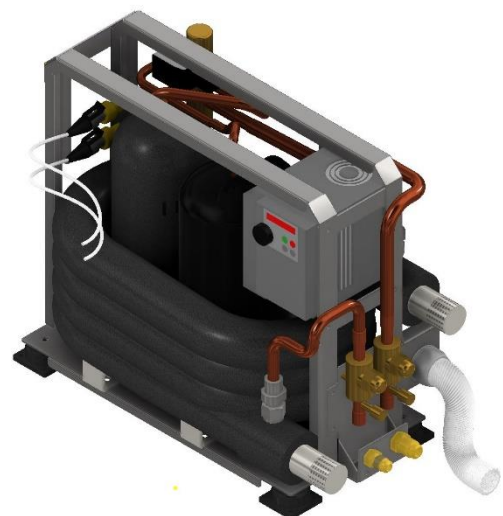
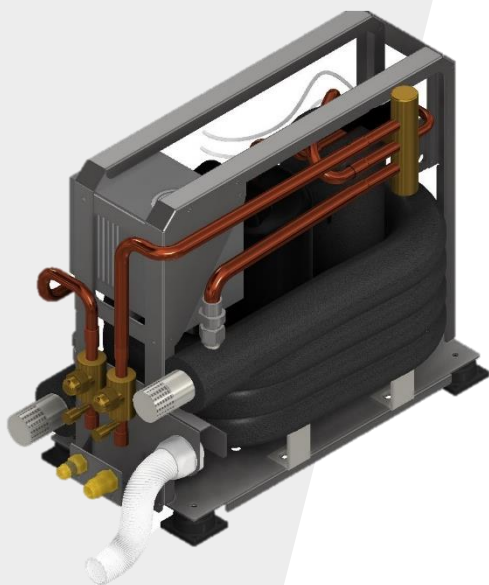
SOFTWARE MANAGEMENT:

Compressor high temperature, low temperature, high pressure
condenser, low pressure compressor, electronic pressure gas, electronic
pressure liquid, Condensation control, Evaporation control



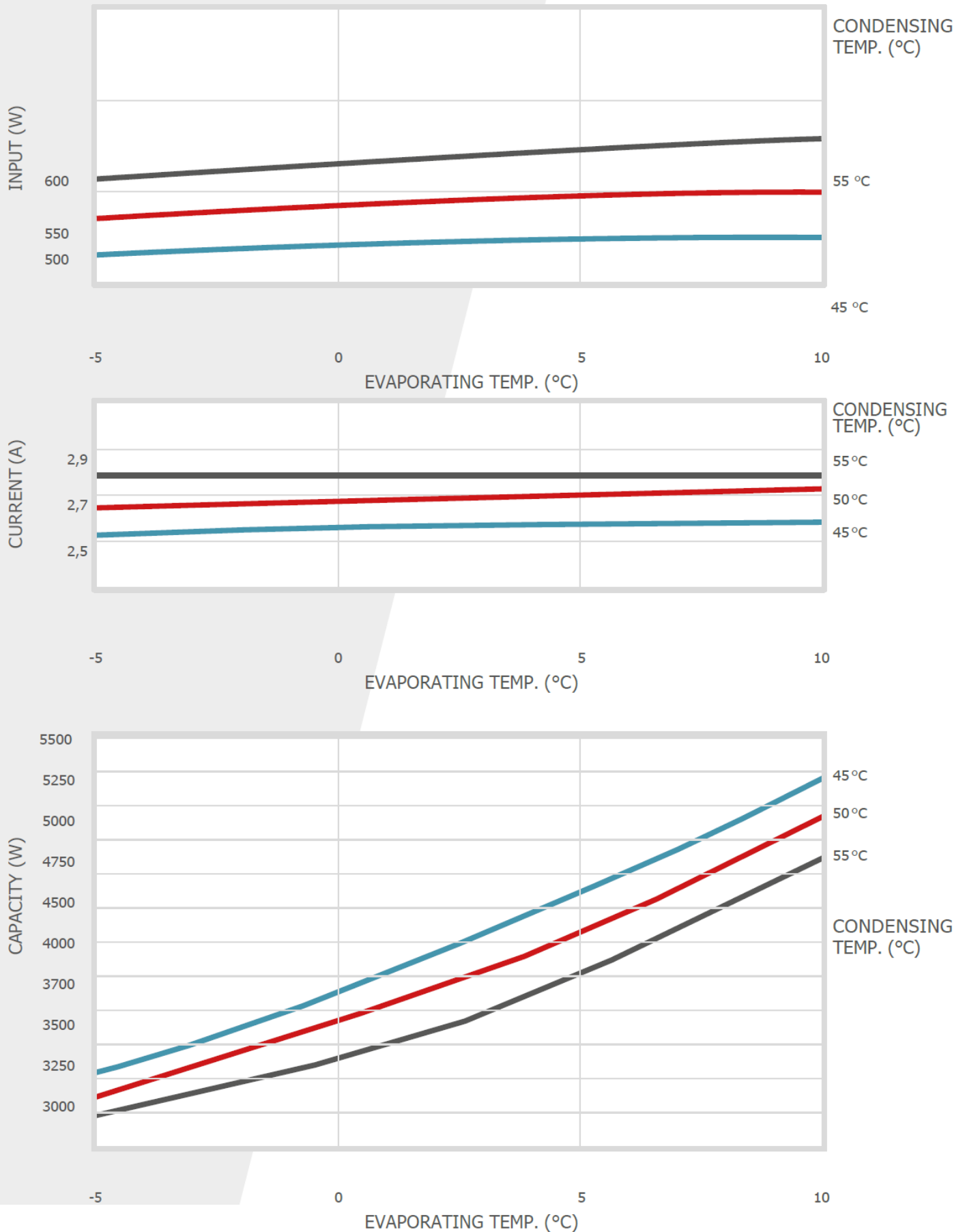
COMPRESSOR PROTECTION:

Over/undervoltage, overcurrent, torque, winding temperature, stepout (bad
lubrication), power input, power output, efficiency, overload, oil level (with EEV)



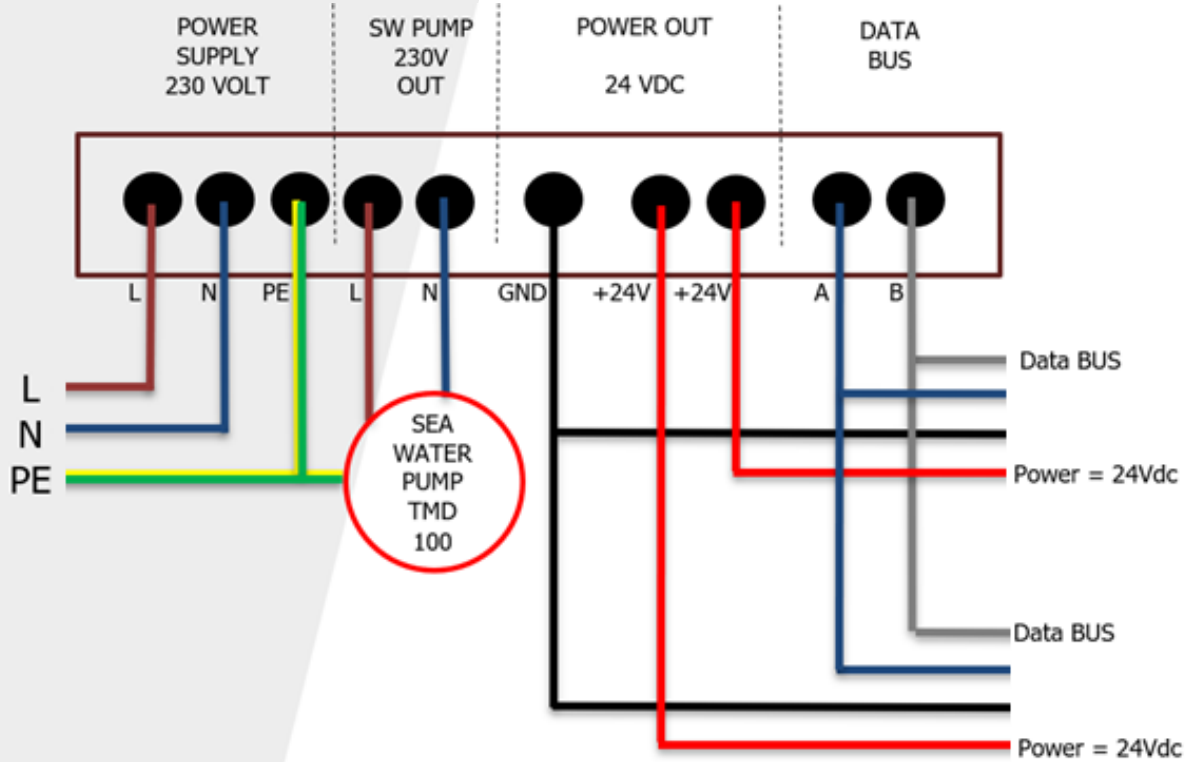
VRV8E1

PERFORMANCE CURVE DC INVERTER 70 rps/100



VRV8E1

ELECTRICAL CONNECTIONS



VRV8E1

OVERALL DIMENSIONS

